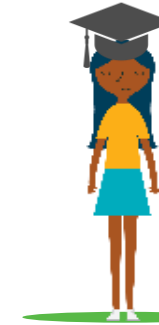


# UFS Provider-Based Mode of Delivery

Mere is enrolled in full-time Provider-Based study with a TEO.



Mere has completed her study and gained her Diploma!



Provider-Based study with a TEO

Enrol the learner in **SDR** and include in SDR submissions for the duration of their study

Use **SoF37** and **ATTEND** codes to identify provider-based or extramural mode of delivery

## Key

Single Data Return

Industry Training Register

Workspace 2