



Tertiary Education Commission
Te Amerangi Mātauranga Matua

ITR Reference Group Data Requirements

Overview

- Events covered today:
 - Learner Details
 - Enrolment
 - Industry Training
 - Modern Apprenticeship
 - Completion
 - Withdrawal
 - Hold/restart
 - MAC Visit



Overview cont...

- Events not covered today:
 - Transfer ITO
 - Employer change
- All data requirements and structures are draft and subject to change

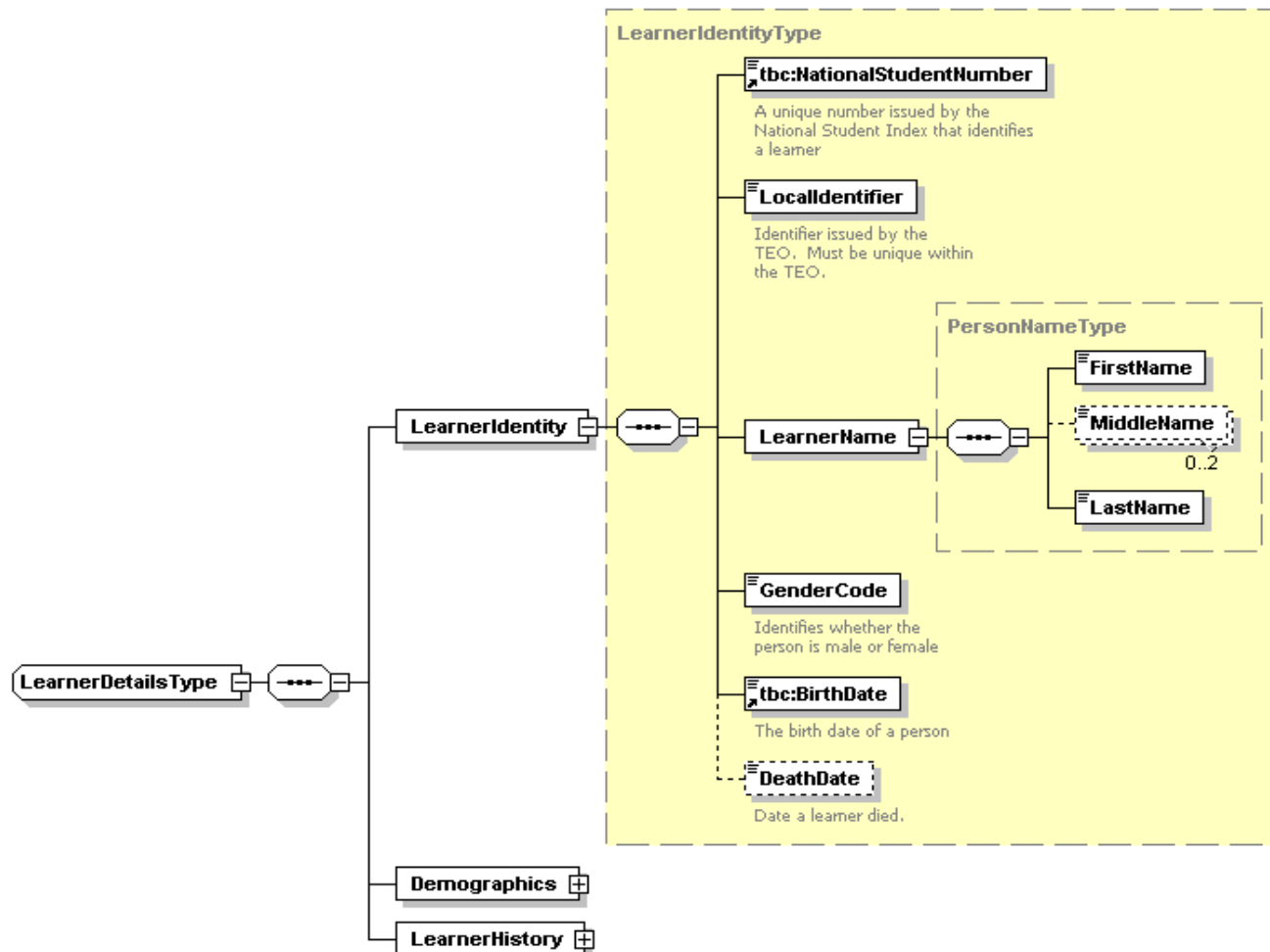


Learner Details

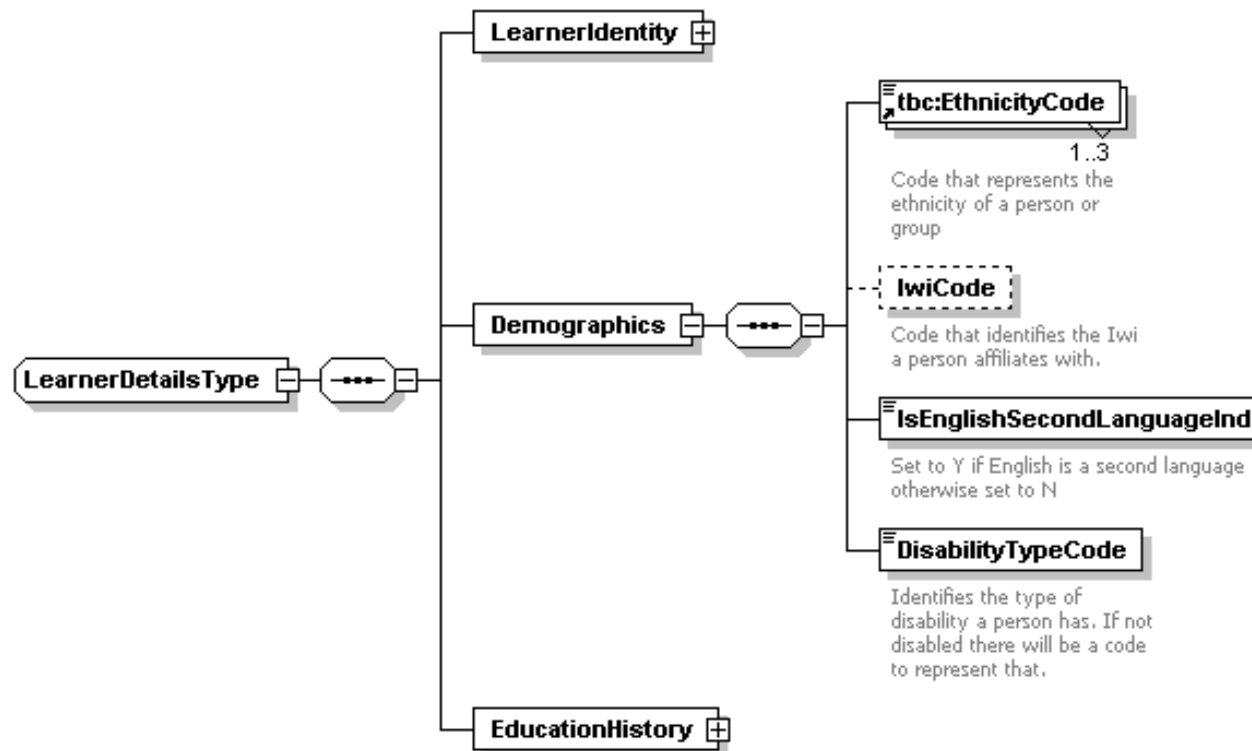
- All transactions must supply the following:
 - Learner Identity – Data that lets us locate the learner in the NSI
 - Learner Demographics – Additional data that describes the learner
 - Education History



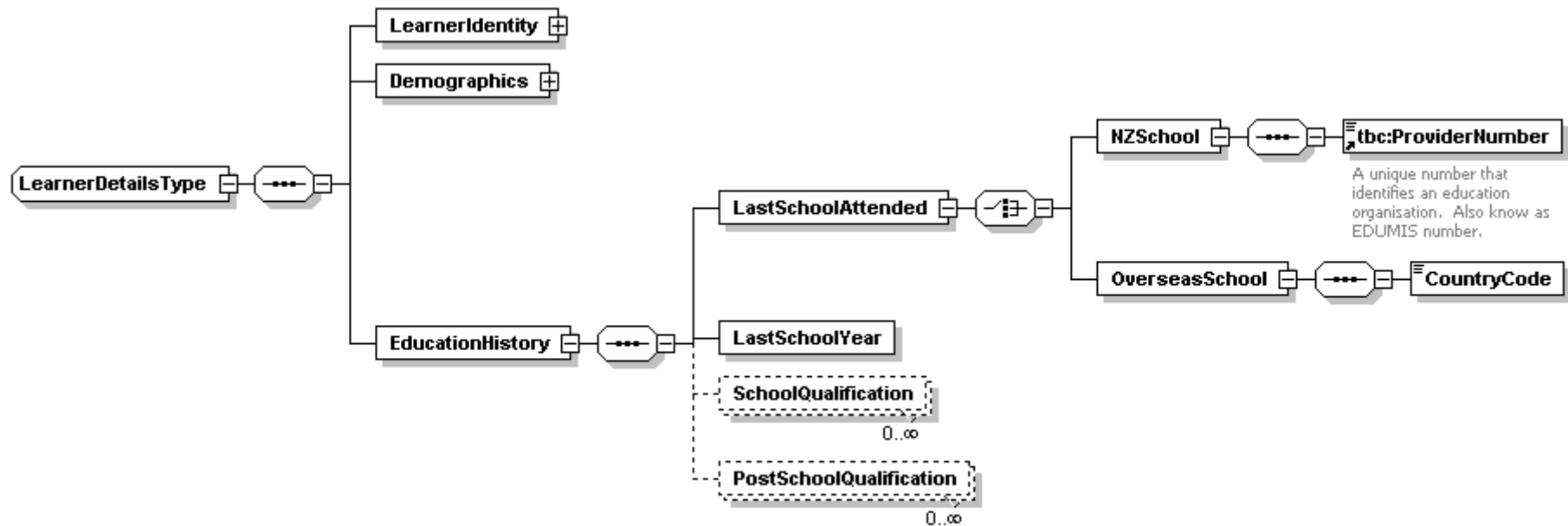
Learner Identity



Learner Demographics



Learner Education History



Generated with XMLSpy Schema Editor www.altova.com

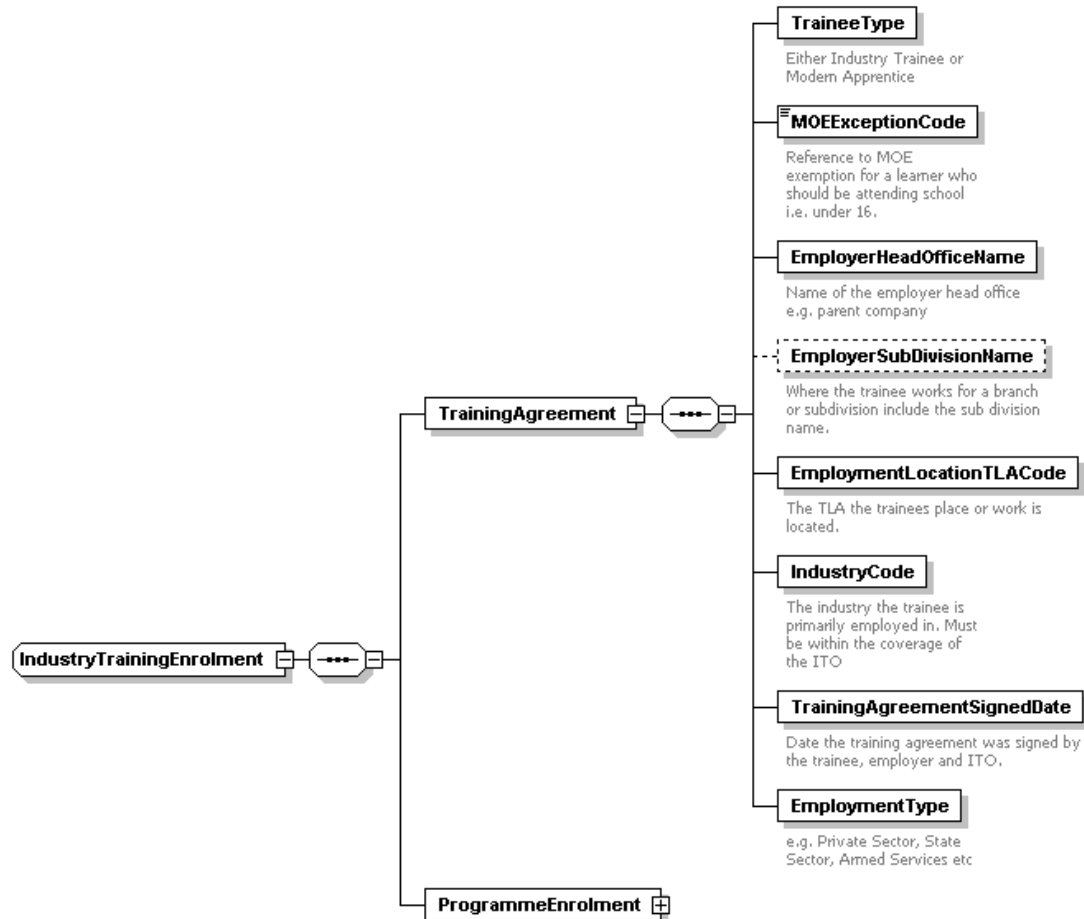


Enrolment

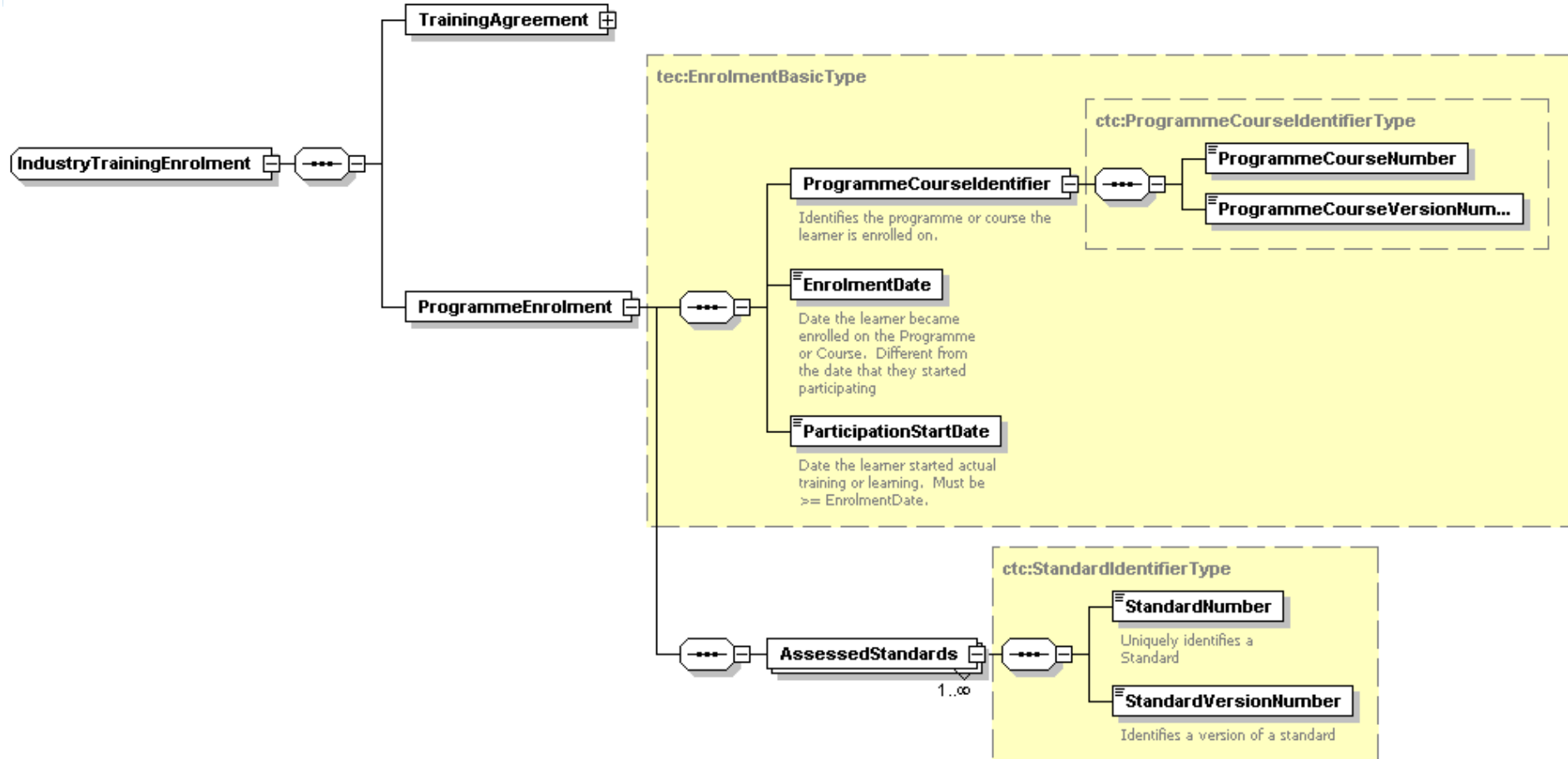
- Contains 2 parts
 - Training Agreement details
 - Programme enrolment details



Enrolment – Training Agreement



Enrolment – Programme Enrolment

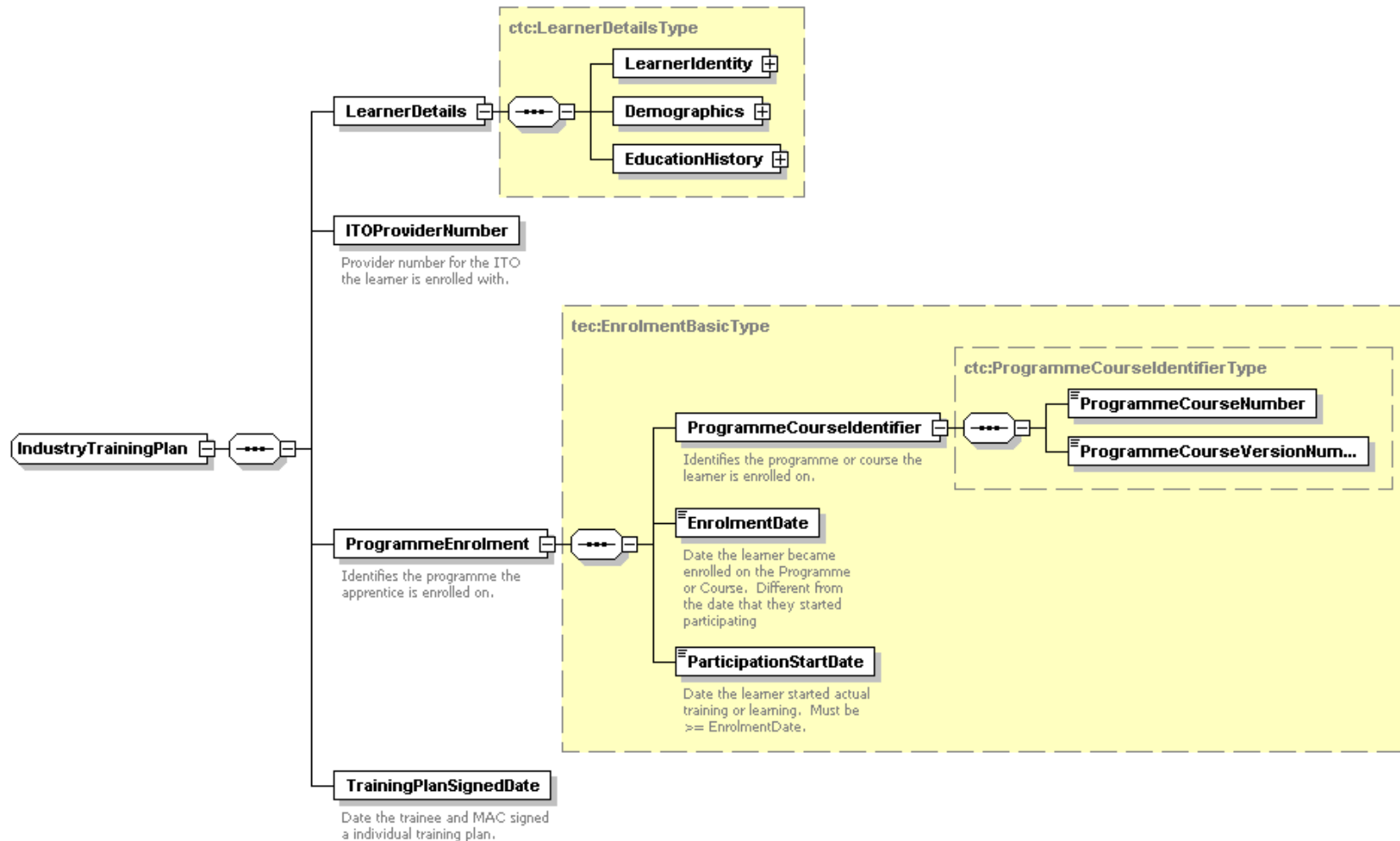


Industry Training Plan

- MAC's will notify TEC when an industry training plan has been signed.
- TEC will not consider the apprenticeship to have commenced until the training plan is signed.



Industry Training Plan

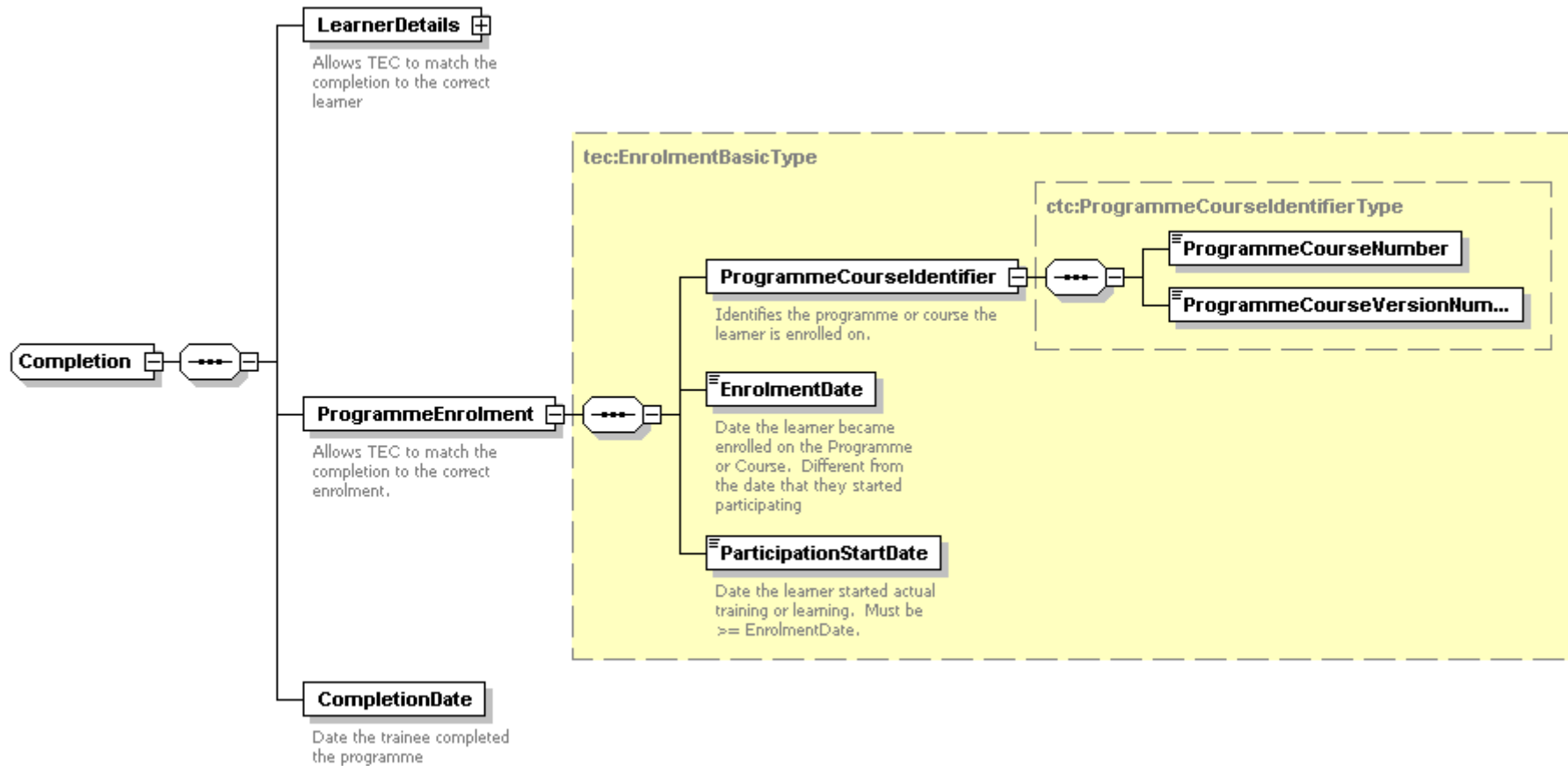


Completion

- A completion is when a trainee successfully finishes a programme and is awarded the associated qualification.
- In other sectors a completion means the learner has finished a programme or course but not necessarily completed a qualification.



Completion

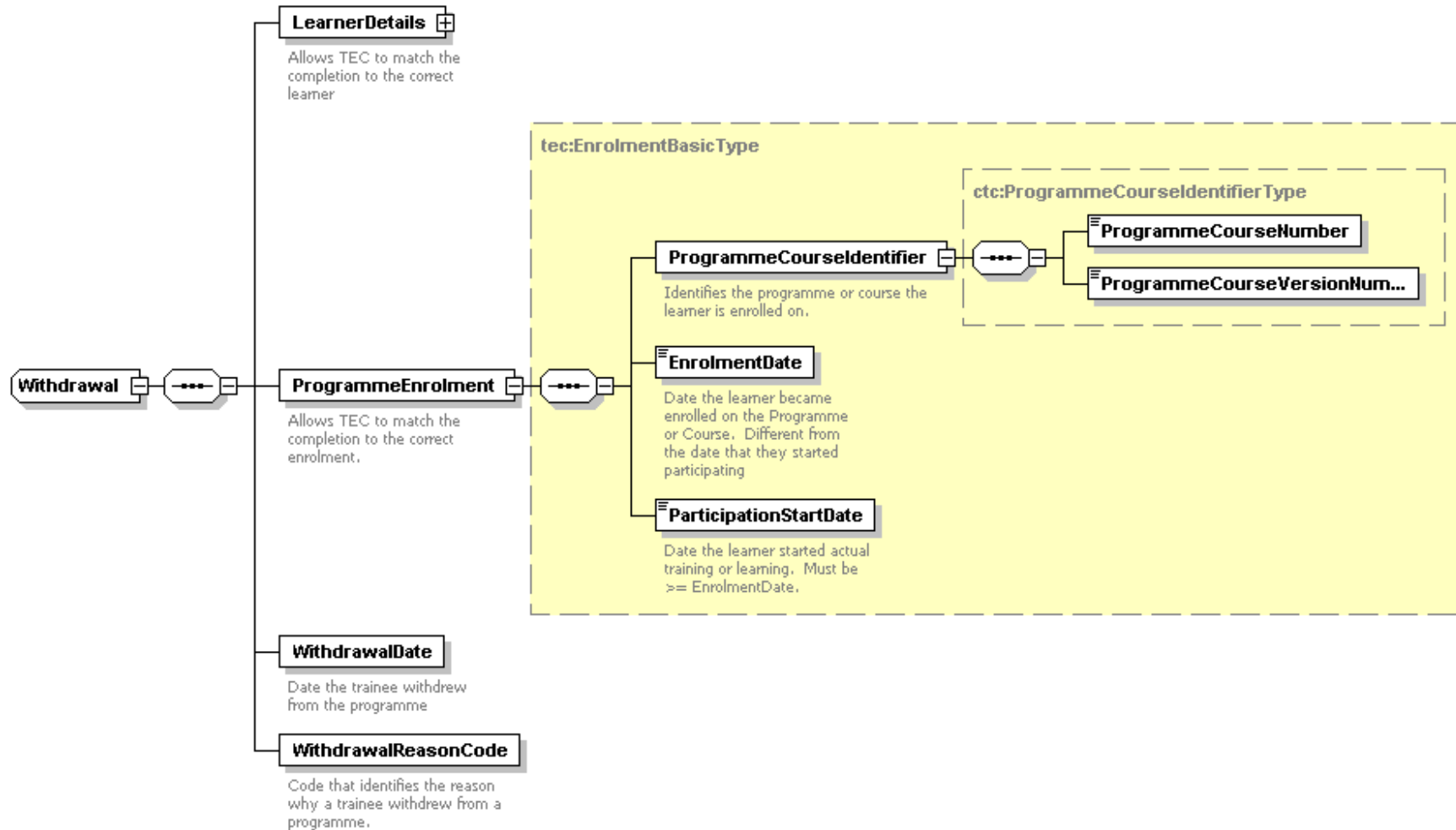


Withdrawal

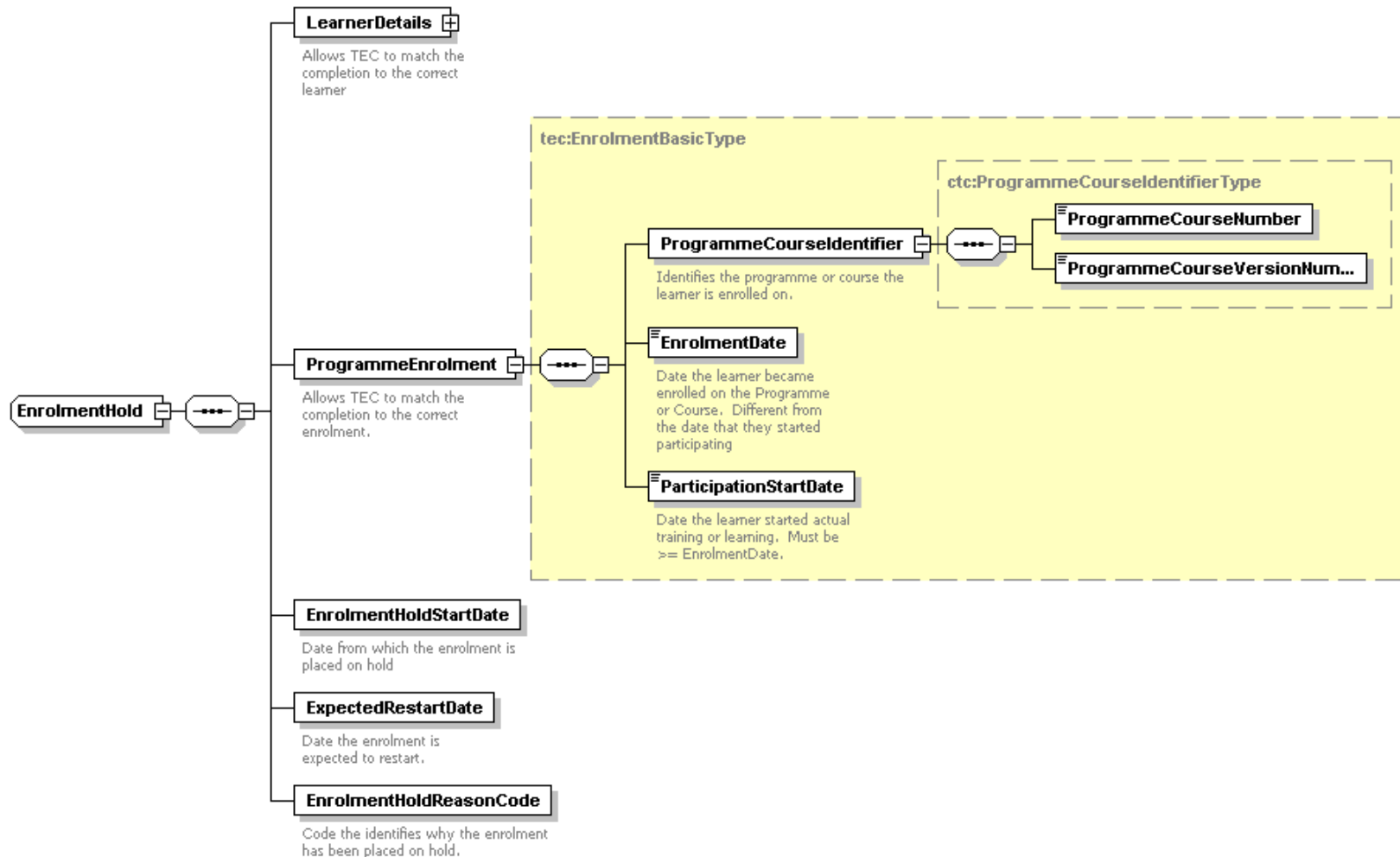
- A withdrawal is where a trainee ceases training without completing the associated qualification.



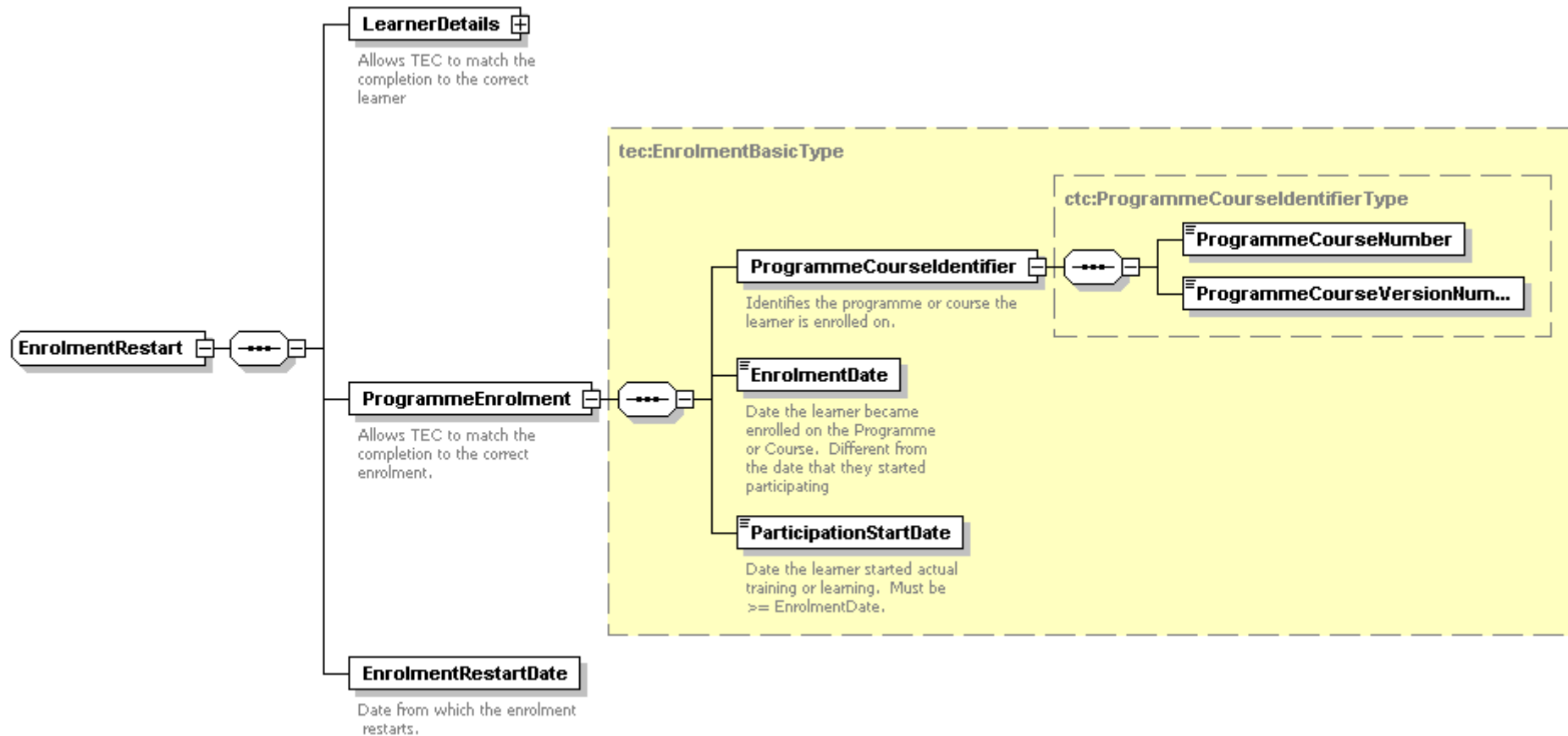
Withdrawal



Enrolment Hold



Enrolment Restart



MAC Visit

